

RIVERVIEW BUSINESS CENTER

**AVAILABLE LAND FOR BUILD-TO-SUITS
OFFICE / SERVICE / DISTRIBUTION / PRODUCTION FACILITIES**



PROPERTY DESCRIPTION

- 284+/- ACRES - BUTTS COUNTY
- FLEXIBLE BUILDING CONFIGURATIONS
- LESS THAN ONE MILE FROM I-75
- CONTROLLED BUSINESS ENVIRONMENT
- INVESTMENT GRADE DEVELOPMENT
- INDUSTRIAL ZONING
- BUILDING SIZES UP TO 2,000,000 S.F.
- ALL UTILITIES TO PARK
- EXCELLENT SE GEORGIA DISTRIBUTION LOCATION VIA ACCESS TO I-75
- WITHIN 500 MILES OF PORT MIAMI (FL.)

**CONTACT: DAYNE PRYOR, PARTNER
PANATTONI DEVELOPMENT CO.**

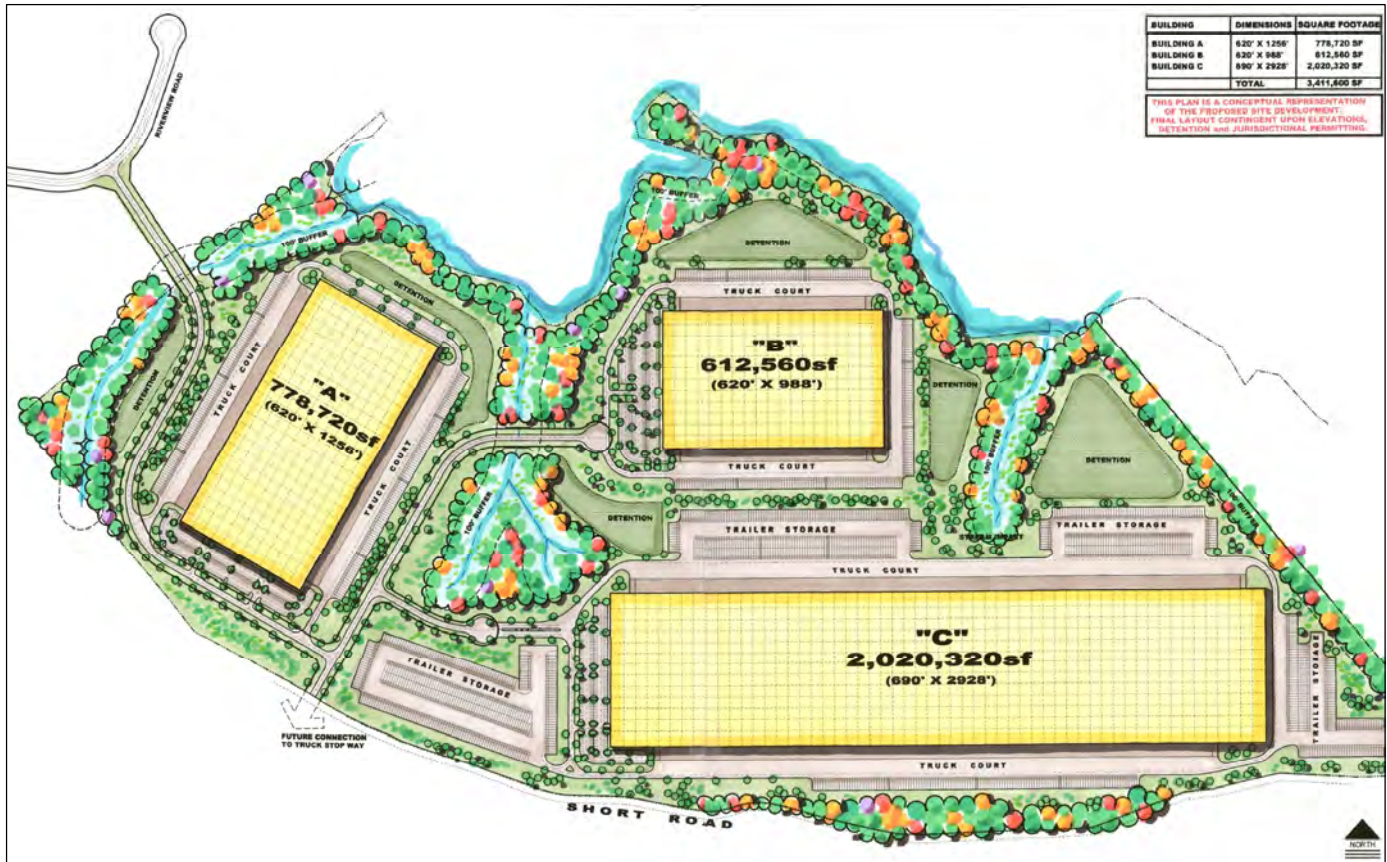
**PHONE: 404-921-2002
MOBILE: 770-655-9855**

EMAIL: dprior@panattoni.com



**BUTTS COUNTY
DEVELOPMENT AUTHORITY**

RIVERVIEW BUSINESS CENTER



RIVERVIEW BUSINESS CENTER

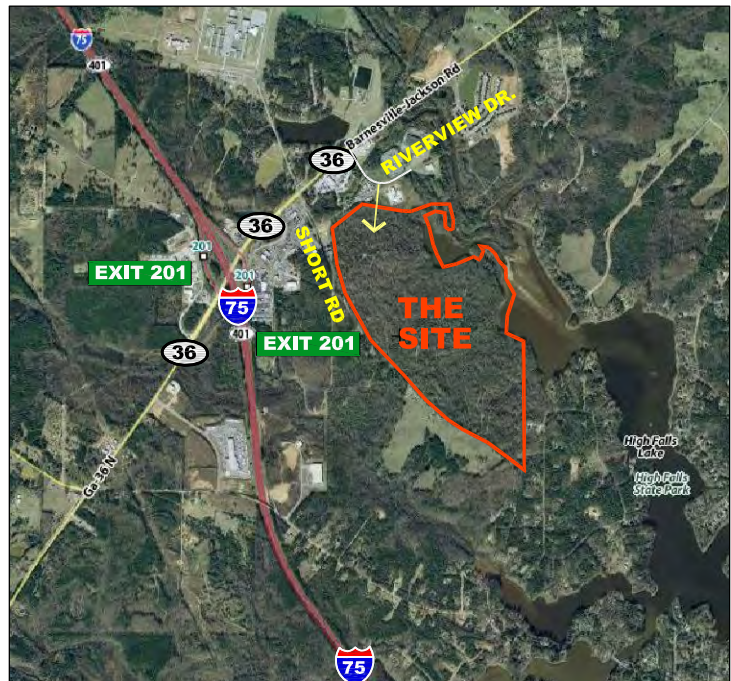
- Land parcels available for build-to-suit opportunities
- Flexible building & site configurations are available
- Up to 2,000,000_ S.F.
- Excellent Interstate access

**CONTACT: DAYNE PRYOR, PARTNER
PANATTONI DEVELOPMENT CO.**

PHONE: 404-921-2002

MOBILE: 770-655-9855

EMAIL: dpryor@panattoni.com



**BUTTS COUNTY
DEVELOPMENT AUTHORITY**